



Ascension Michigan School-Based Health Centers Locations

Benjamin Carson High School of Science and Medicine
571 Mack Ave, Detroit, MI 48201

Garvey Academy
2301 Van Dyke, Detroit, MI 48214

Nolan Elementary Middle School
1150 E. Lantz, Detroit, MI 48203

Cornerstone Jefferson-Douglas Academy, Nevada Campus
6861 Nevada, Detroit, MI 48234

Clintondale Community Schools
35200 Little Mack, Clinton Township, MI 48035

Hutchinson Elementary School
(inside of Howe Middle School)
2600 Garland, Detroit, MI 48214

Osborn University High School
11600 E. 7 Mile Rd., Detroit, MI 48205

Central Collegiate Academy
2425 Tuxedo, Detroit, MI 48206

Covenant House Health Center
2959 Martin Luther King, Detroit, MI 48208

GEE White Academy
5161 Charles Street, Detroit, MI 48212

East English Village Preparatory Academy
5020 Cadieux, Detroit, MI 48224

Denby High School
12800 Kelly Rd., Detroit, MI 48224

Warren Mott High School
3131 E. 12 Mile Rd., Warren, MI 48092

Oak Park High School
13701 Oak Park Blvd., Oak Park, MI 48237

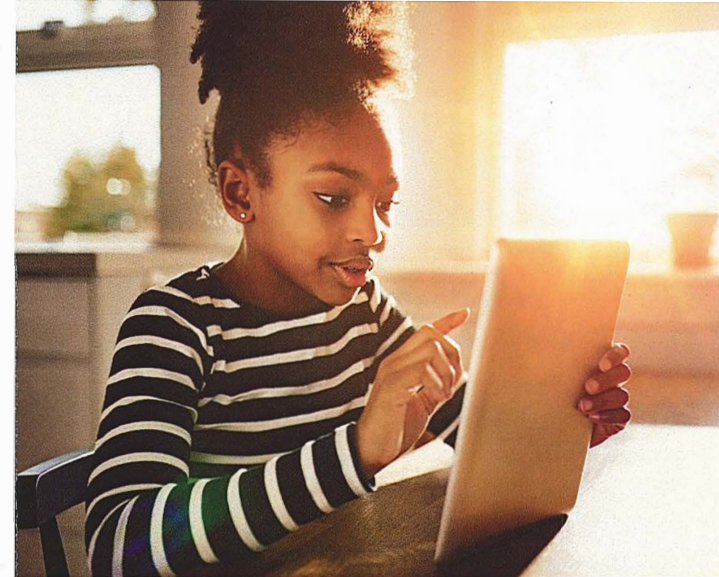
Martin Luther King, Jr. Senior High School
3200 East Lafayette St, Detroit, MI 48207
Primary Care Site

Bunche Elementary-Middle School
2715 Macomb St., Detroit, MI 48207
Behavioral Health Site

Detroit Academy of Arts and Science
2985 East Jefferson Ave, Detroit, MI 48207
Behavioral Health Site

University Preparatory Science & Math Elementary
2251 Antietam, Detroit, MI 48207
School Nursing & Behavioral Health Site

University Preparatory Academy (Psad) Middle School
5310 St. Antoine St, Detroit, MI 48202
Medical Services
34027-66769-003 (2/15/18)



School-Based Health Centers

Building a Healthy Future... One Child at a Time

Who we are

The Ascension MI School-Based Health Centers are an initiative of Ascension Southeast Michigan Community Health, committed to improving the quality of life for the communities we serve.

Our mission is to provide comprehensive health care and health education for our students and to promote the healthy future of our communities by addressing the developmental, physical and emotional needs of our children.

Consent for treatment

All students under the age of 18 must have a signed consent form by parent to receive medical or counseling services.

For more information

For more information about Ascension MI School-Based Health Centers, please call Ascension SEM Community Health, 248-849-5692, or visit www.stjohnprovidence.org/communityhealth



Ascension

“If you want your name remembered, write it across the heart of a child”

— Unknown

Ascension MI School-Based Health Centers

Healthier children. Fewer missed school days. More young people better equipped to settle disagreements peacefully. These are some of the goals of Ascension MI School-Based Health Centers. By providing easier access to health care, we are helping to ensure the improved health, well-being and success of our youth. Our programs nurture body, mind and spirit through traditional physical care as well as mental, emotional and spiritual support.

For many students in our service area, obtaining medical services is a challenge. We are helping to eliminate barriers to care through our 18 school-based health centers in the Metro Detroit area. By providing access to primary and preventive health care and access to Medicaid insurance, SJP is committed to uplifting and empowering our young people to live healthier lifestyles and make healthy decisions.



Health and social educational programs

- Abstinence education
- Safe Dates – a dating and relationship/domestic violence prevention program.
- Life Skills – Interpersonal skill development, including coping and decision-making
- BABES – Beginning Awareness Basic Education Studies, substance abuse prevention
- Red Flags – Depression Awareness & Identification
- Deep Breath – Asthma management/education and asthma camp
- Diabetes Education & Management
- KidMILES – Nutrition and exercise program & Free Press Marathon
- WHYTRY – Violence, drug & alcohol, and drop-out prevention education

Medical services

- General health assessments
- Immunizations
- Gynecological exams and Pap smears
- Laboratory and diagnostic testing
- Dental, vision and hearing screening
- Sports physicals
- Pregnancy testing
- Sexually transmitted disease testing, treatment and counseling
- Nutritional counseling
- Specialist referrals

Counseling services

- Individual and group counseling
- Family counseling
- Substance abuse
- Behavioral modification

